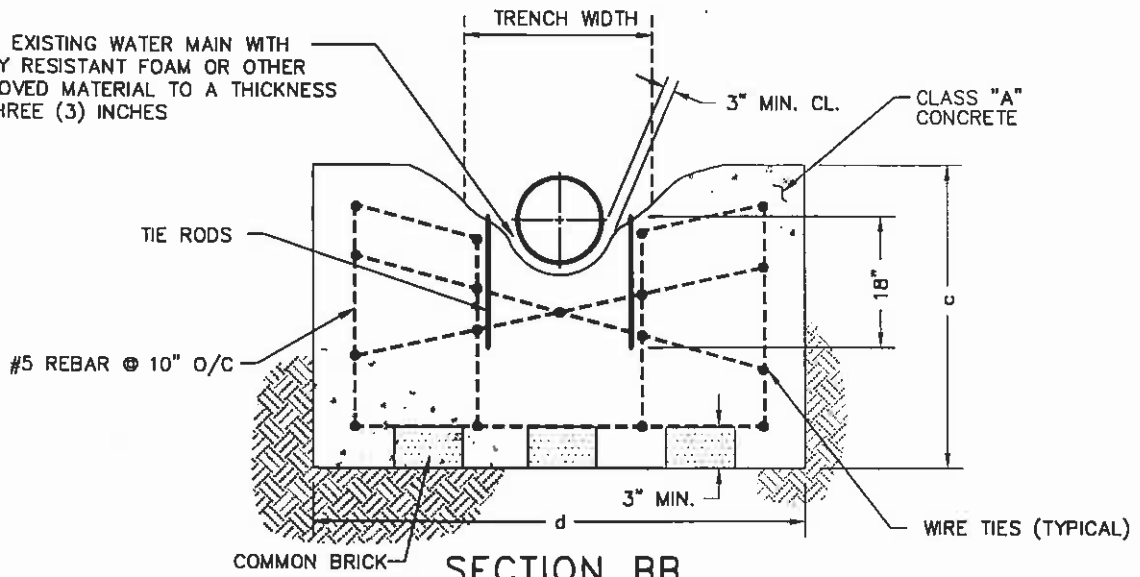
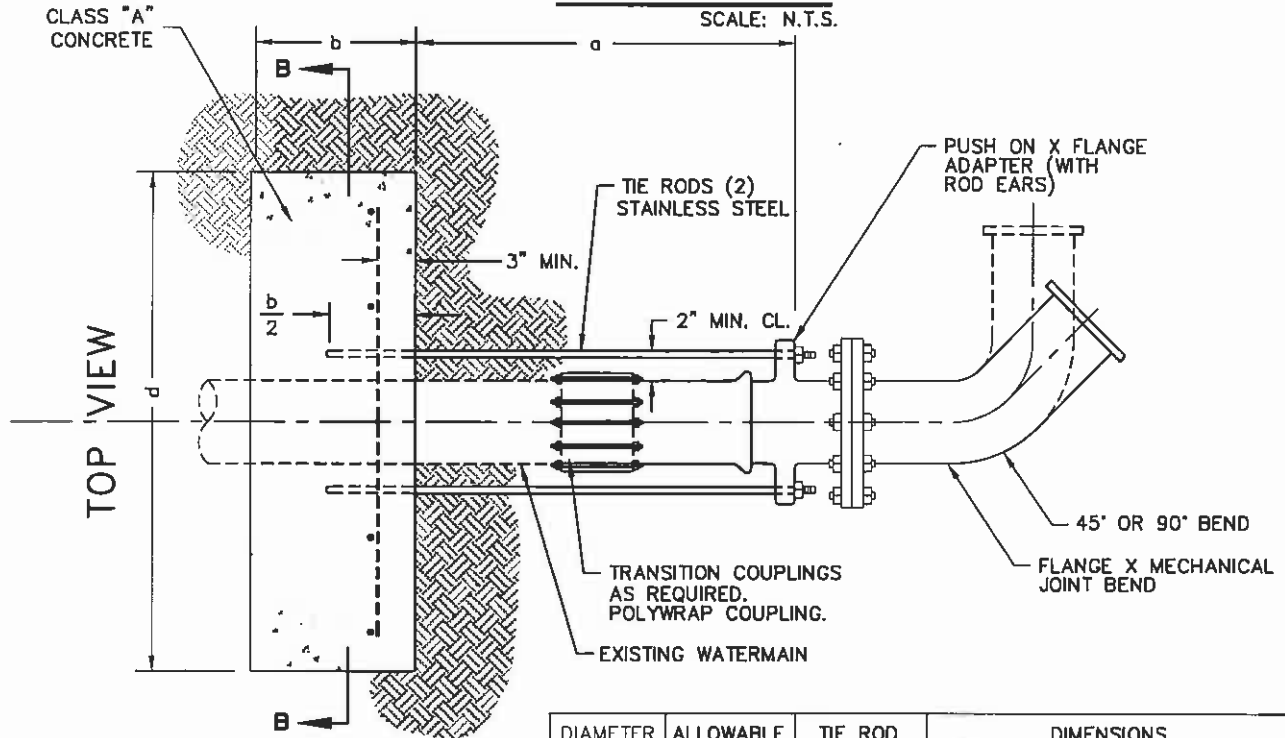


WRAP EXISTING WATER MAIN WITH DECAY RESISTANT FOAM OR OTHER APPROVED MATERIAL TO A THICKNESS OF THREE (3) INCHES



SECTION BB

SCALE: N.T.S.




NOTES:

- A. CONCRETE SHALL BE PLACED AGAINST UNDISTURBED SOIL.
- B. IF OVER EXCAVATION OCCURS, PLACE 6" MIN. CRUSHED ROCK @ 95% RELATIVE COMPACTION.

DIAMETER OF PIPE (INCHES)	ALLOWABLE PRESSURE (PSI)	TIE ROD SIZE	DIMENSIONS			
			a	b	c	d
4"	0-150	5/8"	48"	12"	31"	65"
6"	0-150	5/8"	48"	12"	33"	67"
8"	0-150	5/8"	48"	12"	35"	69"
10"	0-150	3/4"	48"	12"	37"	78"
12"	0-150	3/4"	48"	12"	39"	93"

NOTE: NUTS AND BOLTS FOR TIE RODS SHALL BE STAINLESS STEEL.

THE CITY OF WEST SACRAMENTO – STANDARD DETAIL

APPROVED BY: 	C-38733	3/31/05
CITY ENGINEER	P.E. NO.	DATE
REVISION:		
REVISION:		
REVISION:		
REVISION:		

TITLE:
THRUST RESTRAINT ASSEMBLY

STANDARD DETAIL # 518

